

MAXI-GAZ

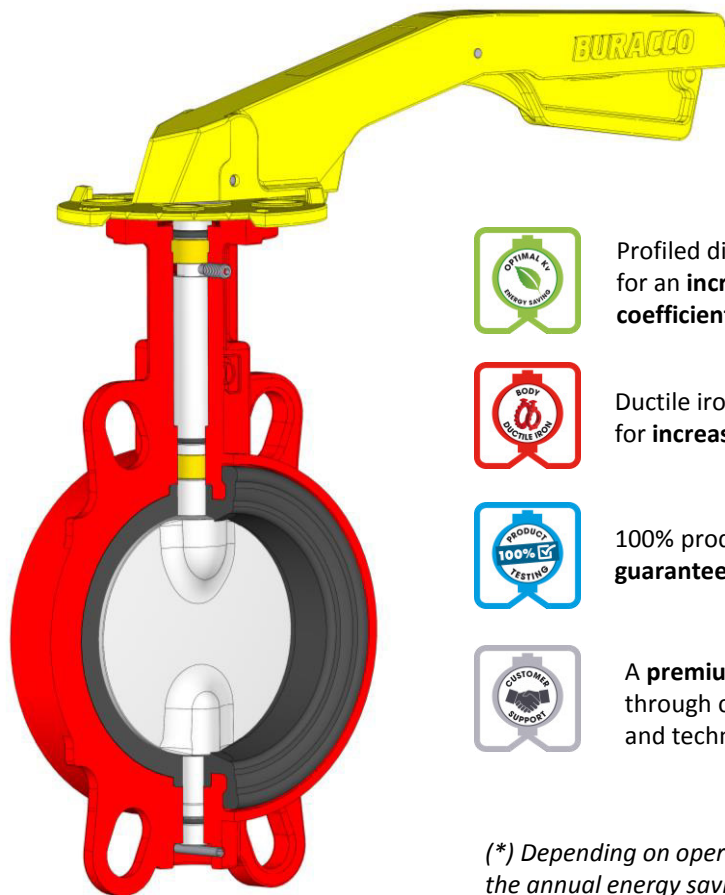
GAS CERTIFIED VALVE



MAXI-GAZ butterfly valves are specially designed for industrial gas networks. With 130 years experience in this field, and with our continuous development efforts, Buracco guarantees reliability, perfect shut-off, durability as well as significant energy savings.

TECHNOLOGY

- ✓ **Yellow** aluminium hand lever, can be **locked out**, ergonomic design
- ✓ Plate **standardised** in accordance with EN-ISO 5211
- ✓ **Epoxy** coated body for an **excellent corrosion resistance**
- ✓ Non-ejectable stem for **optimum security**
- ✓ High collar for insulation
- ✓ Hollow neck to **prevent seizing**
- ✓ **Self-lubricating bearings** for an **ideal shaft coaxiality** and **optimized torque**
- ✓ Seat anchored in the body and self-centering disc guarantee a **low and constant torque** and a **durable seal**
- ✓ Moulding and spherical machining of the seat / valve body contact zone for a **perfect seal**
- ✓ Seat bossed at valve stems to eliminate the risk of external leaks
- ✓ Secondary O-rings for **additional safety**



Profiled disc for an **increased flow rate coefficient (Kv) (*)**



Ductile iron body as standard for **increased resistance**



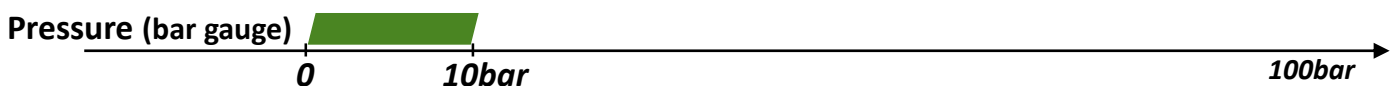
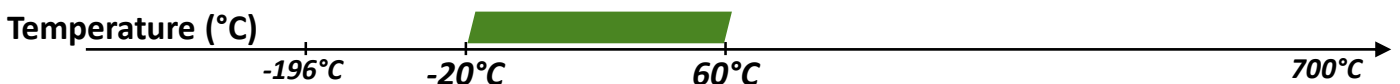
100% product testing to **guarantee performance**



A **premium service** through customer liaison and technical assistance

() Depending on operating conditions, the annual energy savings can be higher than the cost of the valve.*

PERFORMANCE



The maximum pressures and temperatures depend on the pressure/temperature relationship and type of fluid.

CONSTRUCTION

| | | | | | | | | |
|------------------|---|-----|---------------------------|-----|-------------------------------|-----|---------------------------|-----|
| Body | DUCTILE IRON ENJS1030 + EPOXY | | | | | | | |
| Liner | NBR | | | | EPICHLORYDRIN | | | |
| Disc | DUCTILE IRON ENJS1030 + EPOXY | | STAINLESS STEEL A351 CF8M | | DUCTILE IRON ENJS1030 + EPOXY | | STAINLESS STEEL A351 CF8M | |
| Body type | Wafer | Lug | Wafer | Lug | Wafer | Lug | Wafer | Lug |
| Operation | Yellow aluminium hand lever and manual gear box | | | | | | | |

Design

- Designed in accordance with standard EN 593
- Face-to-face in accordance with standard EN 558+A1 base 20

Seal

- In accordance with standard EN 12266-1 Rate A

Approvals

- Certificates NF ROB-GAZ 061 and NF ROB-GAZ 116, CERTIGAZ
- PED 2014/68/UE

Main options

- ATEX construction
- Order conformity certificate / material certificate / pressure test certificate in accordance with standard EN 10204 types 2.1, 2.2 and 3.1
- ...



Wafer



Lug



Aluminium hand lever operation

Manual gear box operation

CHARACTERISTICS

| Components | Material | Description | Benefit |
|-----------------------|-------------------------------|---|---|
| Body | DUCTILE IRON ENJS 1030 | Spheroidal graphite ductile iron has a superior mechanical strength than lamellar graphite cast iron. | Increased safety for personnel and equipment |
| Coating | EPOXY | The EPOXY coating guarantees excellent corrosion resistance . | Maintains product integrity and facilitates cleaning |
| Liner | NBR | This elastomer has strong resistance to gases . | Optimized liner selection for durable performance |
| | EPYCHLORYDRIN | This elastomer has strong resistance to gases at low temperatures | |
| Disc | DUCTILE IRON ENJS1030 + EPOXY | Assembly having the mechanical properties of ductile iron and the chemical protection of EPOXY. | Cost effective |
| | ASTM A351 CF8M | This grade of stainless steel has excellent corrosion resistance . | Uncoated stainless steel |
| Stem and Pivot | 1.4021 / 1.4028 (Inox 13% Cr) | The shafts have excellent mechanical strength and benefit from corrosion resistance of 13% Cr stainless steel. | Lasting integrity of the shaft line |
| Bearings | COMPOSITE THERMOPLASTIC | Corrosion resistant, self-lubricating bearings with excellent mechanical characteristics | Torque stability and lasting of the shaft line |
| Hand lever | ALUMINIUM | The special aluminium gas hand lever is yellow, light, notched, and can be locked out . | CERTIGAZ compliant |



Energy savings

40%

Average increase in Kv coefficient compared to one-piece shaft design.